

- NOTES: 1. Tension wire grid laid out in 10' x 10' sections.
 2. Onstage lighting pipes are hung below grid height.
 3. Uprights for cross pipes are situated at each intersection. Key-Klamp and 10'-6" pipes available.
 4. Telescoping platforms store directly under booths.
 5. Grid Height is 28'-0"

Dimmer Room

SM Booth

Sound Booth

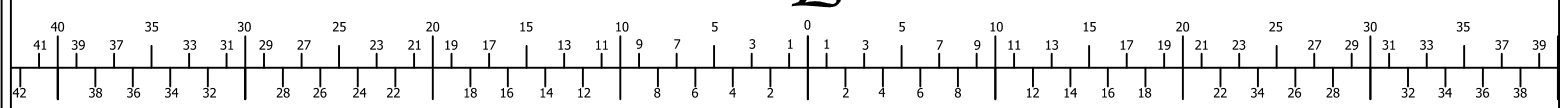
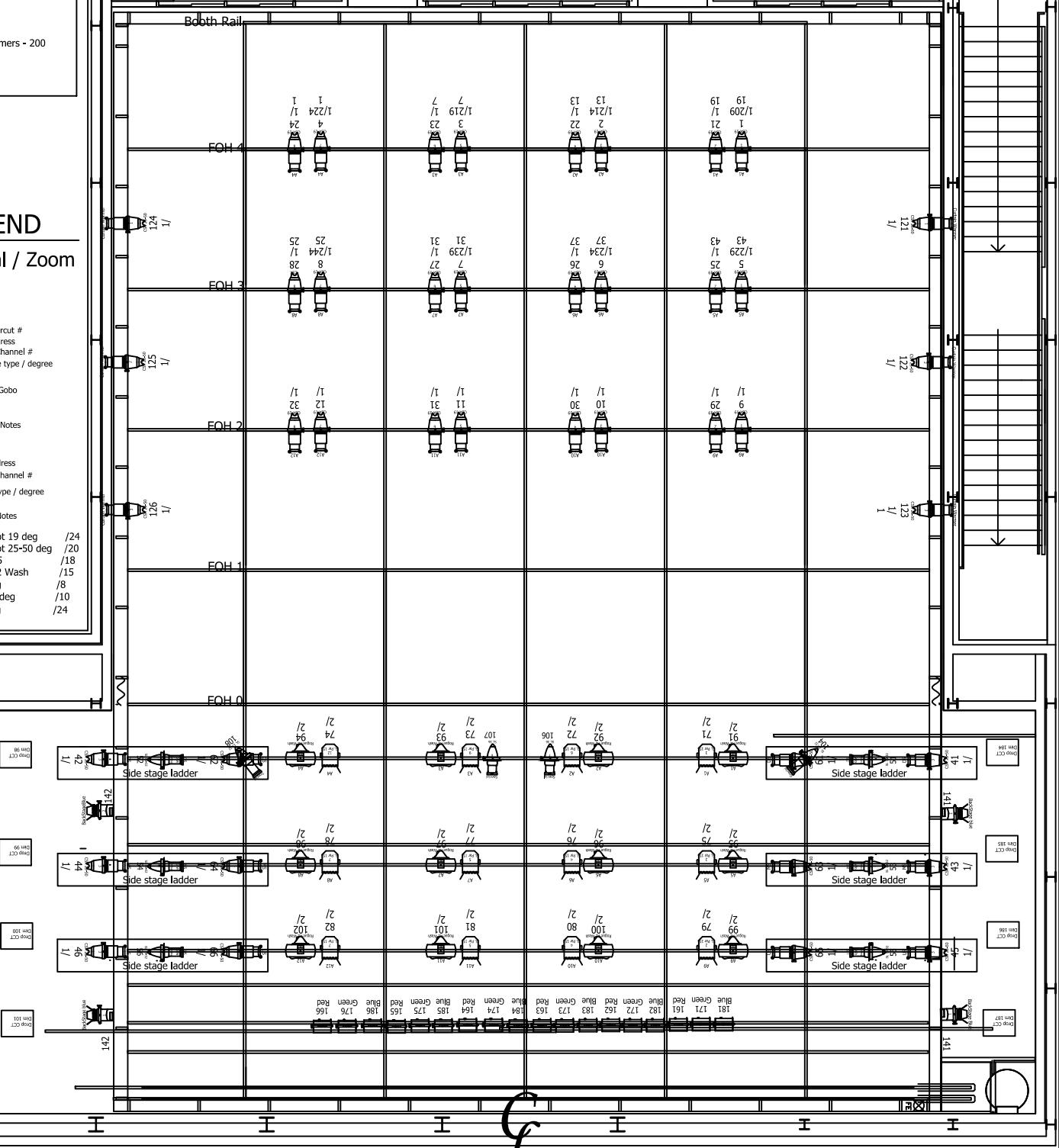
LX Booth

Dimming
CD80 2.4 K Dimmers - 200

LEGEND
Ellipsoidal / Zoom

- 52 — Circuit #
 - /1/ — Address
 - 82 — Channel #
 - Fixture type / degree
 - Gobo
 - Notes
-
- /2/ — Address
 - /74/ — Channel #
 - Fixture type / degree
 - Notes
-
- Color Source Spot 19 deg /24
 - Color Source Spot 25-50 deg /20
 - Showline Par 155 /18
 - Chauvet Rogue 2 Wash /15
 - Strand SL 36 deg /8
 - Strand SL 15-32 deg /10
 - Strand SL 19 deg /24

TEASER
MAIN LEGS
LX1
BORDER LEGS
LX2
BORDER LEGS
LX3
BORDER LEGS
LX4 (CYC)
TRAVELLER
LX5
SCRIM
CYC



FR!NGE THEATRE

edited: 28/06/2016

Westbury Theatre
Stock LX Plot