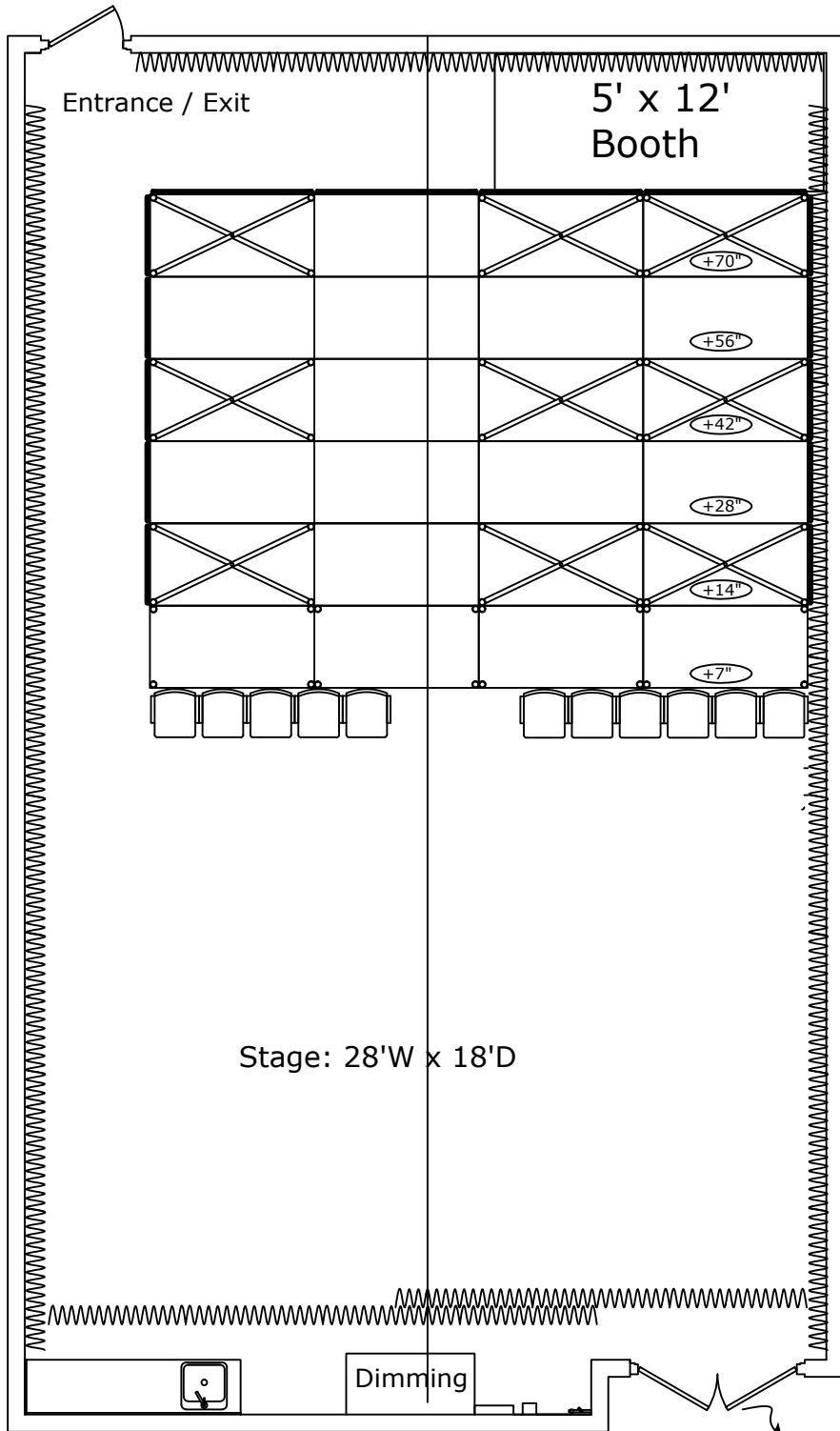


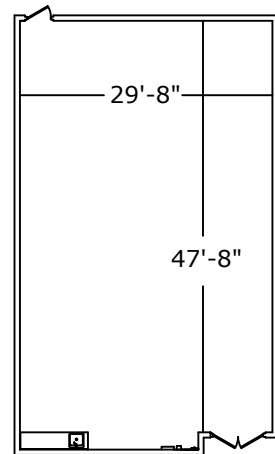
15 13 11 10 9 7 5 3 1 0 1 3 5 7 9 10 11 13 15  
 14 12 8 6 4 2 2 4 6 8 12 14



**NOTES:**

- Stage: 28'W x 18'D
- Grid height: 15'-10"
- curtain surround
- sprung floor

**Room Dimensions**



Area = 1380 square feet

**Amenities include:**

- 200 Amp 3Ø disconnect
- 60 Amp 3Ø disconnect
- curtain surround
- mirrored wall
- sprung floor
- small kitchenette

<b>Studio Theatre</b>	
Date: 06/20/04	76 + 2wheelchair
Scale: NTS	Drawn By: Adam Mitchell

