

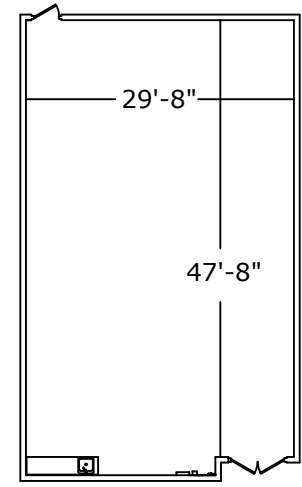
15 13 11 10 9 7 5 3 1 0 1 3 5 7 9 10 11 13 15

14 12 8 6 4 2 2 4 6 8 12 14

**NOTES:**

- Stage: 28'W x 18'D
- Grid height: 15'-10"
- curtain surround
- sprung floor

**Room Dimensions**



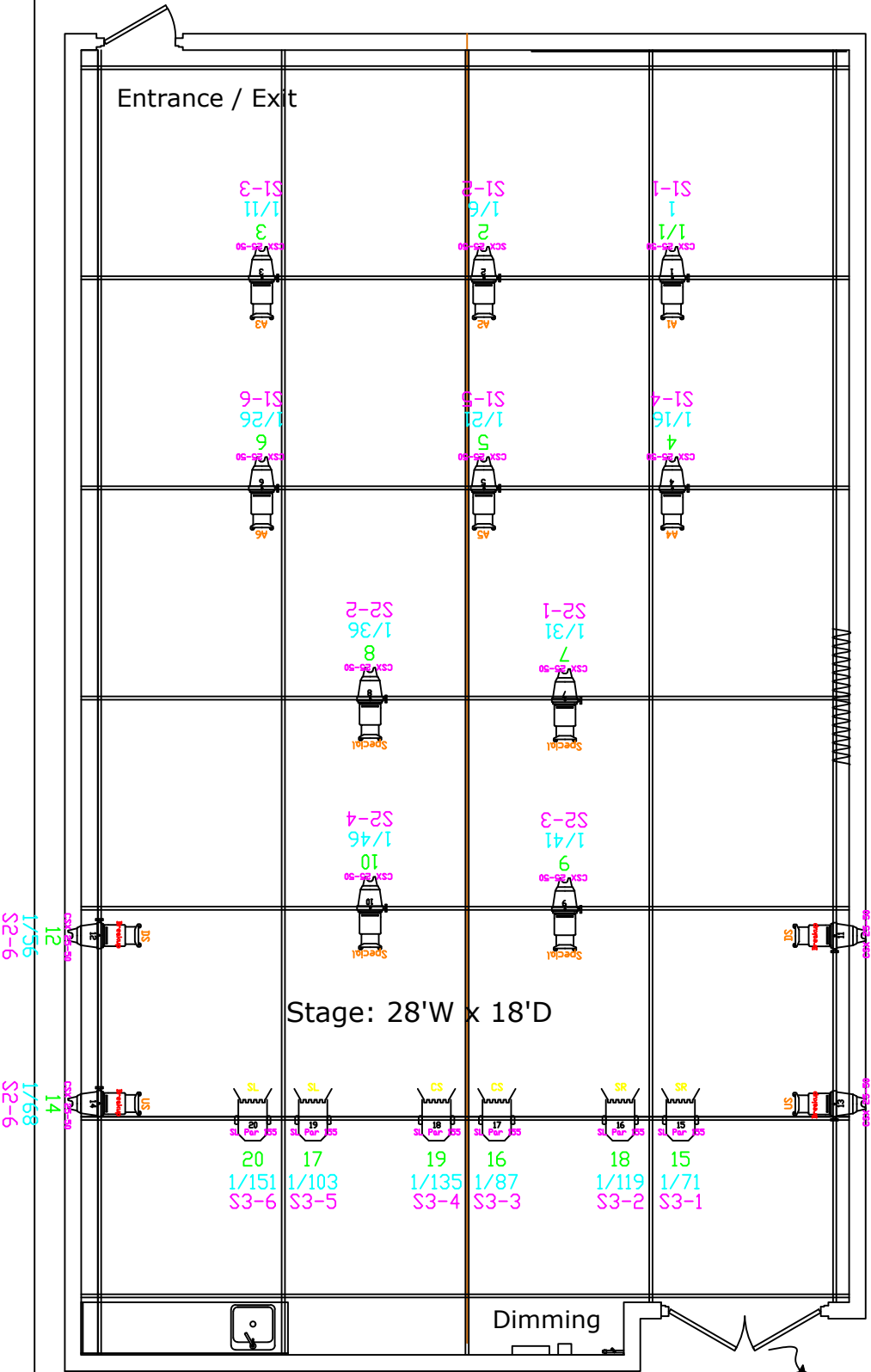
Area = 1380 square feet

**Amenities include:**

- 200 Amp 3ø disconnect
- 60 Amp 3ø disconnect
- curtain surround
- mirrored wall
- sprung floor
- small kitchenette

**Legend:**

	FOCUS		ETC Color Source Spot 25-50 deg
	INSY TYPE CHAN ADDRESS CIRC		Showline Par 155 Zoom



# Studio Theatre

Date: 28/06/2016 Capacity: 78  
 Scale: NTS Drawn By: Rae Dunn

